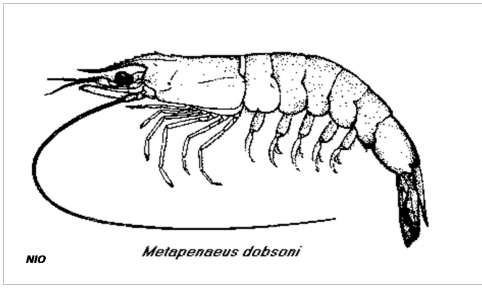


Kadal shrimp Tamil Nadu

IDENTIFICATION



SCIENTIFIC NAME

Metapenaeus dobsoni

SPECIES NAME(S)

Kadal shrimp

STOCK IDENTIFICATION

The species' stock structure is not yet understood ([Mishra et al. 2009](#)) and no formal assessment is known to be conducted. A management unit is considered in Tamil Nadu, one of the most important state in terms of catches in the east coast ([CMFRI 2018](#)).



RELATED LINKS:

- [Indian Central Marine Fisheries Research Institute \(CMFRI\)](#)

ASSESSMENT

No related analysis

SCORES

Management Quality:

Management Strategy	Managers Compliance	Fishers Compliance
NOT YET SCORED	NOT YET SCORED	NOT YET SCORED

Stock Health:

Current Health	Future Health
NOT YET SCORED	NOT YET SCORED

FIPS

No related FIPs

MSC

No related MSC fisheries

Fisheries

Within FishSource, the term "fishery" is used to indicate each unique combination of a flag country with a fishing gear, operating within a particular management unit, upon a resource. That resource may have a known biological stock structure and/or may be assessed at another level for practical or jurisdictional reasons. A fishery is the finest scale of resolution captured in FishSource profiles, as it is generally the scale at which sustainability can most fairly and practically be evaluated.

 MANAGEMENT UNIT	 FLAG COUNTRY	 FISHING GEAR
Tamil Nadu	India	Bottom trawls

Management Unit

 MANAGEMENT UNIT	ORGANIZATION	FISHING AREA
Tamil Nadu	Indian Central Marine Fisheries Research Institute (CMFRI)	FAO 57.1