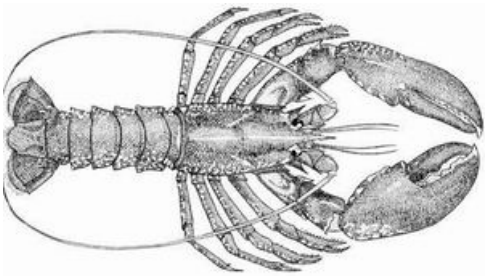


European lobster SW United Kingdom

IDENTIFICATION



SCIENTIFIC NAME

Homarus gammarus

SPECIES NAME(S)

European lobster

COMMON NAMES

European lobster, Lobster

STOCK IDENTIFICATION

European lobster range from Scandinavia to North Africa, inhabiting sub-tidal waters of the eastern North Atlantic Ocean, the Mediterranean Sea and the Western Black Sea (*Prodöhl et al. 2006*). Genetic differentiation among populations is weak overall, but distinct groups have been identified in four locations: northern Norway, Netherlands, remaining Atlantic, and the Aegean.

Six "Lobster Fishery Units" (LFUs) have been defined for purposes of assessment and management of the species in English waters: Northumberland and Durham, Yorkshire Humber, East Anglia, Southeast South Coast, Southwest and Northwest (*Masefield et al. 2017*).



RELATED LINKS:

- [UK Marine Management Organization \(MMO\)](#)
- [UK Centre for Environment, Fisheries and Aquaculture Science \(Cefas\)](#)

ASSESSMENT

No related analysis

SCORES

Management Quality:

Management Strategy	Managers Compliance	Fishers Compliance
NOT YET SCORED	NOT YET SCORED	NOT YET SCORED

Stock Health:

Current Health	Future Health
NOT YET SCORED	NOT YET SCORED

FIPS

- United Kingdom brown crab and European lobster - pot/trap:
Stage 3 , Progress Rating C , Type: Fip , Evaluation Start Date: 1 Mar 2018

MSC


No related MSC fisheries

Fisheries

Within FishSource, the term "fishery" is used to indicate each unique combination of a flag country with a fishing gear, operating within a particular management unit, upon a resource. That resource may have a known biological stock structure and/or may be assessed at another level for practical or jurisdictional reasons. A fishery is the finest scale of resolution captured in FishSource profiles, as it is generally the scale at which sustainability can most fairly and practically be evaluated.

 ASSESSMENT UNIT	 MANAGEMENT UNIT	 FLAG COUNTRY	 FISHING GEAR
SW United Kingdom	United Kingdom - Industrial	United Kingdom	Pots

Management Unit

 MANAGEMENT UNIT	ORGANIZATION	FISHING AREA
United Kingdom	UK Marine Management Organization (MMO)	FAO 27.7.g, FAO 27.7.e, FAO 27.7.f