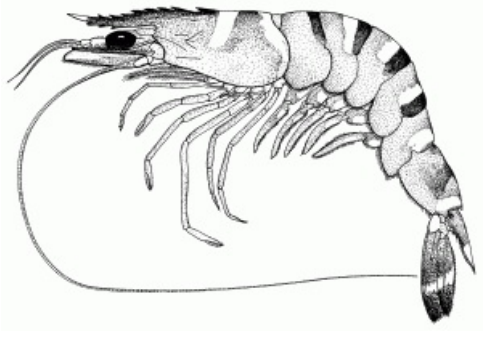


Giant tiger prawn Nigeria

IDENTIFICATION



SCIENTIFIC NAME

Penaeus monodon

SPECIES NAME(S)

Giant tiger prawn

COMMON NAMES

black tiger shrimp, jumbo shrimp

STOCK IDENTIFICATION

Giant tiger prawn *Penaeus monodon* is native from the Pacific and Indian Oceans. Is thought to be introduced in the Gulf of Guinea around 1992 and can be found in Nigerian coastal waters (Isebor, 2003; Anyanwy et al, 2011).



RELATED LINKS:

- [Nigerian Fisheries & Aquaculture Department \(FDF\)](#)

ASSESSMENT

Strengths

Technical management measures are defined in law (e.g. minimum mesh size of the codend at 44mm, maximum power engine). A non-trawling zone is established within the 5 nautical miles of the continental shelf, trawling is also prohibited in waters shallower than 18m. Turtle Excluder Devices are used since 1996 to reduce the interaction with marine turtles and compliance improved in the last years. 75% of the bycatch portion needs to be landed by law.

Weaknesses

No stock assessment is conducted and data about the species and related fishery is not updated and publicly available. Harvest rules are not established for the fishery. There are signs of non-compliance with fishing regulations. Conflict between artisanal and industrial fisheries for the resources and fishing area. High proportion of bycatch in shrimp trawling fisheries – mainly finfish – but there is no current available data about the species, quantification and status. The effect of trawling on the seabed ecosystem and on Protected, Endangered and Threatened species is not documented.

SCORES

Management Quality:

Management Strategy	Managers Compliance	Fishers Compliance
< 6	< 6	10

Stock Health:

Current Health	Future Health
NOT YET SCORED	NOT YET SCORED

FIPS

No related FIPs

MSC

No related MSC fisheries

RECOMMENDATIONS

CATCHERS & REGULATORS




- Evaluate impacts of this non-native tiger prawn on the ecosystem.
- Establish a management plan for all shrimp species and monitor the impacts of the tiger prawn fishery.
- Evaluate the status of other species retained in this fishery.
- Improve compliance with gear and fishing area regulations.

RETAILERS & SUPPLY CHAIN


- Ask the Nigerian government to improve their monitoring of the non-native tiger prawn and management of the fishery that targets it.
- Ask your suppliers to start a fishery improvement project to evaluate and improve the sustainability of this fishery. While the giant tiger prawn is non-native and intense harvest may be warranted, the secondary effects of that harvest on the ecosystem must be monitored and managed.

Fisheries

Within FishSource, the term "fishery" is used to indicate each unique combination of a flag country with a fishing gear, operating within a particular management unit, upon a resource. That resource may have a known biological stock structure and/or may be assessed at another level for practical or jurisdictional reasons. A fishery is the finest scale of resolution captured in FishSource profiles, as it is generally the scale at which sustainability can most fairly and practically be evaluated.

 MANAGEMENT UNIT	 FLAG COUNTRY	 FISHING GEAR
Nigeria	Nigeria	Twin bottom otter trawls

Management Unit

 MANAGEMENT UNIT	ORGANIZATION	FISHING AREA
Nigeria	Nigerian Fisheries & Aquaculture Department (FDF)	FAO 34