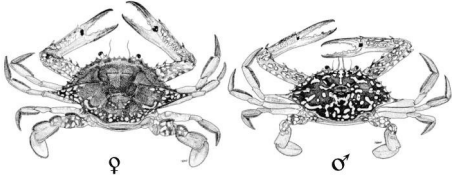


Blue swimming crab Tolo Bay and Banda Sea

IDENTIFICATION



SCIENTIFIC NAME

Portunus pelagicus

SPECIES NAME(S)

Blue swimming crab, Flower crab

COMMON NAMES

Rajungan (Indonesian common name)

STOCK IDENTIFICATION



RELATED LINKS:

- [Ministry of Marine Affairs and Fisheries of the Republic of Indonesia \(KKP-RI\)](#)
- [Indonesia Commission for Fish Stock Assessment](#) , [Indonesian Research Center for Fisheries \(Pusriskan\)](#) , [Ministry of Marine Affairs and Fisheries of the Republic of Indonesia \(KKP-RI\)](#)

ASSESSMENT

No related analysis

SCORES

Management Quality:

Management Strategy	Managers Compliance	Fishers Compliance
NOT YET SCORED	NOT YET SCORED	NOT YET SCORED

Stock Health:

Current Health	Future Health
NOT YET SCORED	NOT YET SCORED

FIPS




No related FIPs

MSC


No related MSC fisheries

Fisheries

Within FishSource, the term "fishery" is used to indicate each unique combination of a flag country with a fishing gear, operating within a particular management unit, upon a resource. That resource may have a known biological stock structure and/or may be assessed at another level for practical or jurisdictional reasons. A fishery is the finest scale of resolution captured in FishSource profiles, as it is generally the scale at which sustainability can most fairly and practically be evaluated.

 MANAGEMENT UNIT	 FLAG COUNTRY	 FISHING GEAR
Tolo Bay and Banda Sea (WPP 714)	Indonesia	Bottom trawls
		Set gillnets (anchored)
		Traps

Management Unit

 MANAGEMENT UNIT	ORGANIZATION	FISHING AREA
Tolo Bay and Banda Sea (WPP 714)	Ministry of Marine Affairs and Fisheries of the Republic of Indonesia (KKP-RI)	FAO 71, Indonesian WPP-RI 714 (Tolo Bay and Banda Sea)