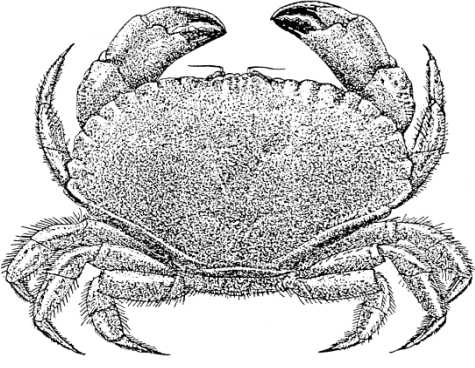


# Edible crab Western English Channel

## IDENTIFICATION



### SCIENTIFIC NAME

*Cancer pagurus*

### SPECIES NAME(S)

Edible crab, Brown crab

### STOCK IDENTIFICATION

Stock boundaries for edible crab remain poorly understood. Based on larval distributions and development, hydrographic conditions and the distribution of the fisheries, there are five assessment units named "Crab Fishery Units (CFU)" in England and Wales: [Central North Sea](#), [Southern North Sea](#), [Eastern English Channel](#), [Western English Channel](#) and [Celtic Sea](#) (Masefield et al. 2015).



### RELATED LINKS:

- [Department for Environment Food & Rural Affairs \(Defra\)](#), [UK Marine Management Organization \(MMO\)](#)
- [UK Centre for Environment, Fisheries and Aquaculture Science \(Cefas\)](#)

## ASSESSMENT

No related analysis

### SCORES

#### Management Quality:

Management Strategy	Managers Compliance	Fishers Compliance
NOT YET SCORED	NOT YET SCORED	NOT YET SCORED

#### Stock Health:

Current Health	Future Health
NOT YET SCORED	NOT YET SCORED

## FIPS

- United Kingdom brown crab and European lobster - pot/trap:

Stage 3, Progress Rating C, Type: Fip, Evaluation Start Date: 1 Mar 2018

## MSC

No related MSC fisheries

## RECOMMENDATIONS

### RETAILERS & SUPPLY CHAIN


- This profile is not currently high on our priority list for development, and we can't at this time provide an accurate prediction of when it will be developed. To speed up an evaluation of the sustainability status of lower priority fisheries we have initiated a program whereby industry can directly contract SFP-approved analysts to develop a FishSource profile on a fishery. More information on this External Contributor Program is available at <https://www.sustainablefish.org/Programs/Science/External-Contributor-Program>.

# Fisheries

Within FishSource, the term "fishery" is used to indicate each unique combination of a flag country with a fishing gear, operating within a particular management unit, upon a resource. That resource may have a known biological stock structure and/or may be assessed at another level for practical or jurisdictional reasons. A fishery is the finest scale of resolution captured in FishSource profiles, as it is generally the scale at which sustainability can most fairly and practically be evaluated.

 ASSESSMENT UNIT	 MANAGEMENT UNIT	 FLAG COUNTRY	 FISHING GEAR
Western English Channelmng	United Kingdom/EU Area VIIe	United Kingdom	Pots

## Management Unit

 MANAGEMENT UNIT	ORGANIZATION	FISHING AREA
United Kingdom/EU Area VIIe	Department for Environment Food & Rural Affairs (Defra), UK Marine Management Organization (MMO)	FAO 27.7.e, FAO 27.7.h, FAO 27.7.d