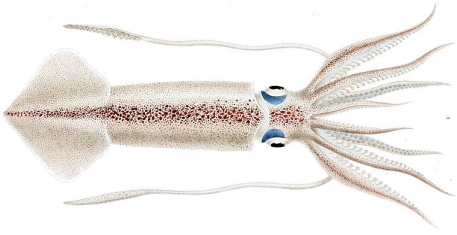


Patagonian squid Falkland Islands

IDENTIFICATION



SCIENTIFIC NAME

Doryteuthis (amerigo) gahi

SPECIES NAME(S)

Patagonian squid

STOCK IDENTIFICATION

Several authors found that a single stock of Patagonian squid exists around Falkland Islands and that there are no genetic differences between spawning cohorts (e.g. Carvalho and Pitcher, 1989; Vega et al., 2001; Shaw et al., 2004). However there are two fishing seasons related with two spawning cohorts – autumn-spawning cohort (ASC) and the spring-spawning cohort – that are subject to different oceanographic conditions, show distinct dynamics, are assessed and managed separately (Arkhipkin et al., 2007; FIG, 2013) and were thus here considered. Both national and international fleets operate within the Falkland Interim Conservation and Management Zone (FICZ) and Falkland Islands Outer Conservation Zone (FOCZ) and the existence of a distinct stock out of FICZ is referred by Casey et al. (2013) but further research is needed. Besides, Arkhipkin et al. (2007) consider that the life cycle of Patagonian squid is completed within FICZ. The map below regards an approximate distribution of both spawning stocks on the eastern-southern area of Falkland Islands.



RELATED LINKS:

- [Falkland Islands Fisheries Department \(FIFD\)](#)
- [Falkland Islands Fisheries Department \(FIFD\)](#)

ASSESSMENT

No related analysis

SCORES

Management Quality:

Management Strategy	Managers Compliance	Fishers Compliance
NOT YET SCORED	NOT YET SCORED	NOT YET SCORED

Stock Health:

Current Health	Future Health
NOT YET SCORED	NOT YET SCORED

FIPS

No related FIPs

MSC

No related MSC fisheries





RECOMMENDATIONS

RETAILERS & SUPPLY CHAIN

- This profile is not currently high on our priority list for development, and we can't at this time provide an accurate prediction of when it will be developed. To speed up an evaluation of the sustainability status of lower priority fisheries we have initiated a program whereby industry can directly contract SFP-approved analysts to develop a FishSource profile on a fishery. More information on this External Contributor Program is available at <https://www.sustainablefish.org/Programs/Science/External-Contributor-Program>.
- Ensure your supply chain is represented in SFP's [Global Squid Supply Chain Roundtable](#) to review improvement needs in this and other similar fisheries, catalyze fishery improvement projects, and monitor progress in improvement efforts.

Fisheries

Within FishSource, the term "fishery" is used to indicate each unique combination of a flag country with a fishing gear, operating within a particular management unit, upon a resource. That resource may have a known biological stock structure and/or may be assessed at another level for practical or jurisdictional reasons. A fishery is the finest scale of resolution captured in FishSource profiles, as it is generally the scale at which sustainability can most fairly and practically be evaluated.

 ASSESSMENT UNIT	 MANAGEMENT UNIT	 FLAG COUNTRY	 FISHING GEAR
Autumn-spawning cohortmng	Falkland Islands	Falkland Islands (malvinas)	Bottom trawls
		Spain	Bottom trawls
Spring-spawning cohortmng	Falkland Islands	Falkland Islands (malvinas)	Bottom trawls
		Spain	Bottom trawls

Management Unit

 MANAGEMENT UNIT	ORGANIZATION	FISHING AREA
Falkland Islands	Falkland Islands Fisheries Department (FIFD)	FAO 41.3.2, Loligo gahi AU ASC
Falkland Islands	Falkland Islands Fisheries Department (FIFD)	FAO 41.3.2, Loligo gahi AU SSC