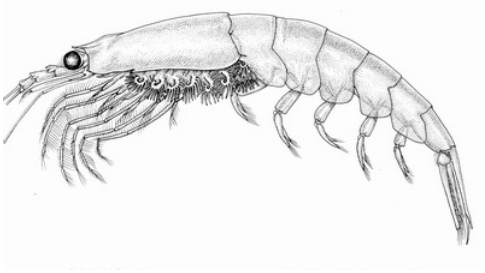


Antarctic krill Atlantic Southern Ocean

IDENTIFICATION



SCIENTIFIC NAME

Euphausia superba

SPECIES NAME(S)

Antarctic krill

STOCK IDENTIFICATION

Krill presents an extensive distribution but until now no formal stock separation, including genetics, has proven that different stocks exist. Area 48 is considered to be a single management unit (Hønneland et al., 2015a). The [map](#) shows the management unit (Area 48) limits. The spatial distribution of the fishery is mainly concentrated in the region of the Bransfield Strait off the Antarctic Peninsula (Subarea 48.1), to the northwest of Coronation Island (Subarea 48.2) and also to the north of South Georgia (Subarea 48.3). Little fishing is undertaken currently in 48.5 or 48.6.



RELATED LINKS:

- [Commission for the Conservation of Antarctic Marine Living Resources \(CCAMLR\)](#)
- [Commission for the Conservation of Antarctic Marine Living Resources \(CCAMLR\)](#)

ASSESSMENT

Strengths

- Previous research on the stock status suggested krill biomass to be in good shape and in the range of 37–208 million tonnes, i.e. well above 75% B₀ (original biomass before the fishery has started).
- There is scientific confidence that the current catch level does not affect the total krill biomass.
- Swarm analysis has been used for krill density estimates and this approach has been considered very useful for understanding krill seasonal cycles.
- Catches have been below the global catch trigger level but present an increasing trend in the last 10 years.
- The fishery is well managed (under the precautionary and ecosystem approaches) and there are many regulations in place to protect the ecosystem.
- Antarctic krill have been subject of several recent studies covering distinct topics of the ecosystem.

Weaknesses

- Total catches for the season 2017/2018 increase 29% in relation to the previous year and it was the highest level of catch since the early 1990s.
- There is no analytical assessment since 2000. There are no reference points in place to assess the real state of the stock. A multinational investigation effort is needed to develop a synoptic survey.
- TAC and trigger level management divided among the smaller-scale subareas (SSMUs), to avoid local depletion, are not yet in place. However, a spatial concentration of krill catches has been observed, namely in areas where krill-dependent species forage.
- Climate-change effects on krill populations need to be clarified since there is contradictory information on its effects on krill abundance.
- Competition between the fisheries occurring and protected species in some localized areas need to be evaluated to support special protection measures.
- The CCAMLR Convention Area is divided into nine [MPA planning domains](#). Domain 1 MPA is not established yet due to lack of consensus between Commission Members.
- More information on possible bycatch impacts on ice krill and adult mackerel icefish is needed.

SCORES

Management Quality:

Management Strategy	Managers Compliance	Fishers Compliance
≥ 8	10	10

Stock Health:

Current Health	Future Health
≥ 8	≥ 8

FIPS

No related FIPs

MSC

- Aker Biomarine Antarctic Krill:
MSC Recertified
- Deris S.A. - Pesca Chile - Antarctic krill fishery:
MSC Certified
- Rimfrost Antarctic krill:
Suspended




RECOMMENDATIONS

RETAILERS & SUPPLY CHAIN


- Monitor fishery and management system for any changes that could jeopardize MSC re-certification.
- Support efforts to manage this fishery at a finer spatial scale, as enabled by current catch reporting, to further reduce risks of local area depletion of krill.
- Support efforts to enable an updated multi-national krill biomass survey.

Fisheries

Within FishSource, the term "fishery" is used to indicate each unique combination of a flag country with a fishing gear, operating within a particular management unit, upon a resource. That resource may have a known biological stock structure and/or may be assessed at another level for practical or jurisdictional reasons. A fishery is the finest scale of resolution captured in FishSource profiles, as it is generally the scale at which sustainability can most fairly and practically be evaluated.

 MANAGEMENT UNIT	 FLAG COUNTRY	 FISHING GEAR
CCAMLR Area 48	Chile	Midwater trawls
	China	Midwater trawls
	Korea, Republic of	Midwater trawls
	Norway	Midwater trawls
	Ukraine	Midwater trawls
CCAMLR Area 58	China	Midwater trawls

Management Unit

 MANAGEMENT UNIT	ORGANIZATION	FISHING AREA
CCAMLR Area 48	Commission for the Conservation of Antarctic Marine Living Resources (CCAMLR)	FAO 48
CCAMLR Area 58	Commission for the Conservation of Antarctic Marine Living Resources (CCAMLR)	FAO 58