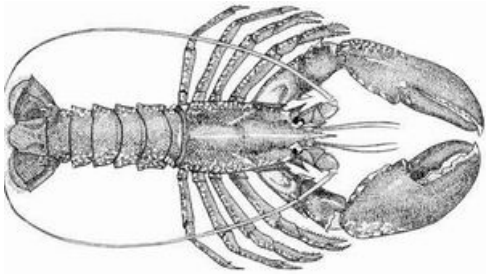


Fishery Profile
https://www.fishsource.org/fishery_page/6123

This profile last updated on 23 January 2019

European lobsterSW United Kingdom

 Fishery:  SW United Kingdom  United Kingdom  United Kingdom  Pots

IDENTIFICATION

SCIENTIFIC NAME
Homarus gammarus
SPECIES NAME(S)

European lobster

COMMON NAMES

European lobster, Lobster

STOCK IDENTIFICATION

European lobster range from Scandinavia to North Africa, inhabiting sub-tidal waters of the eastern North Atlantic Ocean, the Mediterranean Sea and the Western Black Sea (*Prodöhl et al. 2006*). Genetic differentiation among populations is weak overall, but distinct groups have been identified in four locations: northern Norway, Netherlands, remaining Atlantic, and the Aegean.

Six "Lobster Fishery Units" (LFUs) have been defined for purposes of assessment and management of the species in English waters: Northumberland and Durham, Yorkshire Humber, East Anglia, Southeast South Coast, Southwest and Northwest (*Masefield et al. 2017*).


RELATED LINKS:

- [UK Marine Management Organization \(MMO\)](#)
- [UK Centre for Environment, Fisheries and Aquaculture Science \(Cefas\)](#)

ASSESSMENT

No related analysis

SCORES
Management Quality:

Management Strategy	Managers Compliance	Fishers Compliance
NOT YET SCORED	NOT YET SCORED	NOT YET SCORED

Stock Health:

Current Health	Future Health
NOT YET SCORED	NOT YET SCORED

FIPS

- United Kingdom brown crab and European lobster - pot/trap:

Stage 3 , Progress Rating C , Type: Fip , Evaluation Start Date: 1 Mar 2018

MSC

No related MSC fisheries