



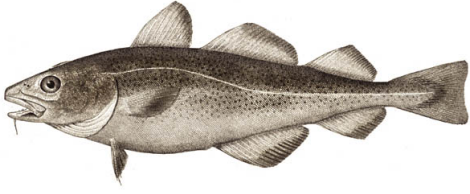


Atlantic cod Faroe Bank

 Fishery:  Faroe Bank  Faroe Islands, Division Vb2  Faroe Islands  Bottom trawls

IDENTIFICATION



SCIENTIFIC NAME

Gadus morhua

SPECIES NAME(S)

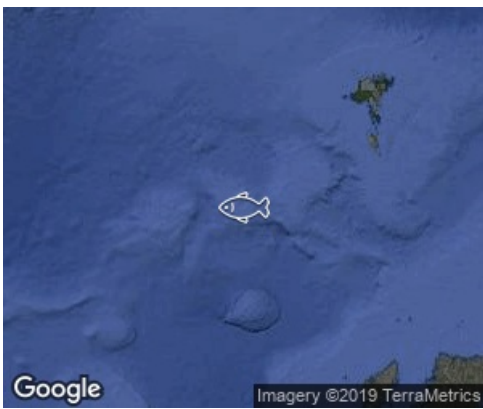
Atlantic cod

COMMON NAMES

Faroe bank cod

STOCK IDENTIFICATION

Both genetic and tagging studies suggest the cod on the Faroe Plateau (Division Vb2) is a distinct biological stock from cod on the Faroe Plateau (Division Vb1) and in Icelandic waters (Division Va) (ICES, 2013b).



RELATED LINKS:

- [Faroese Ministry of Fisheries](#)
- [International Council for the Exploration of the Sea \(ICES\)](#)

ASSESSMENT

Strengths

- Fishing effort has been significantly reduced in recent years.
- No fishing days were allocated in the 2012/2013 fishing season.

Weaknesses

- Both spring and summer survey indices suggest the stock is well below average.
- There is still no indication of strong incoming year classes.
- The effort management system appears to have not protected the stock from overfishing.

Options

- The fishery should be closed until the stock recovers to previously healthy levels.
- A system to separate catches originating from Faroe bank and Plateau on the same trip should be implemented.
- The management system should be reviewed.

SCORES

Management Quality:

Management Strategy	Managers Compliance	Fishers Compliance
< 6	≥ 6	≥ 6

Stock Health:

Current Health	Future Health
< 6	NOT YET SCORED

FIPS

No related FIPs

MSC

No related MSC fisheries