



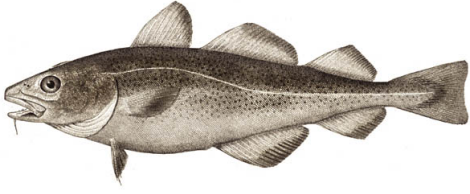


# Atlantic cod Faroe Bank

 Fishery:  Faroe Bank  Faroe Islands, Division Vb2  Faroe Islands  Longlines

## IDENTIFICATION



### SCIENTIFIC NAME

*Gadus morhua*

### SPECIES NAME(S)

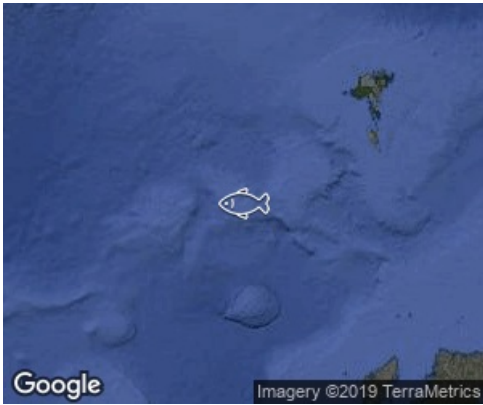
Atlantic cod

### COMMON NAMES

Faroe bank cod

### STOCK IDENTIFICATION

Both genetic and tagging studies suggest the cod on the Faroe Plateau (Division Vb2) is a distinct biological stock from cod on the Faroe Plateau (Division Vb1) and in Icelandic waters (Division Va) (ICES, 2013b).



### RELATED LINKS:

- [Faroese Ministry of Fisheries](#)
- [International Council for the Exploration of the Sea \(ICES\)](#)

## ASSESSMENT

### Strengths

- Fishing effort has been significantly reduced in recent years.
- No fishing days were allocated in the 2012/2013 fishing season.

### Weaknesses

- Both spring and summer survey indices suggest the stock is well below average.
- There is still no indication of strong incoming year classes.
- The effort management system appears to have not protected the stock from overfishing.

### Options

- The fishery should be closed until the stock recovers to previously healthy levels.
- A system to separate catches originating from Faroe bank and Plateau on the same trip should be implemented.
- The management system should be reviewed.

## SCORES

### Management Quality:

Management Strategy	Managers Compliance	Fishers Compliance
< 6	≥ 6	≥ 6

### Stock Health:

Current Health	Future Health
< 6	NOT YET SCORED

## FIPS

No related FIPs

## MSC

No related MSC fisheries