

Shrimp - Bangladesh Shrimp - Bangladesh

Last updated on 26 July 2018

SUMMARY

SUMMARY

IDENTIFICATION

SCIENTIFIC NAME(S)

Penaeus monodon

SPECIES NAME(S)

Giant tiger prawn

JURISDICTION

Khulna

PREDOMINANT PRODUCTION SYSTEM

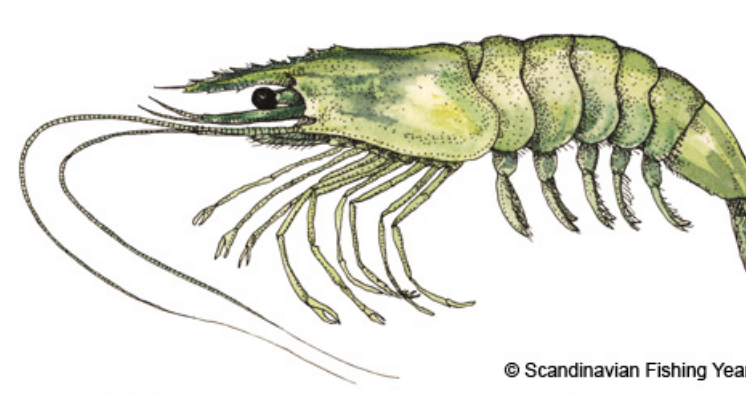
Pond

WATER SOURCE

Brackish

JUVENILE SOURCE

hatchery - wild broodstock



© Scandinavian Fishing Year Book

Image: [Scandinavian Fishery Year Book](#)

RELATED LINKS:

- [Department of Fisheries \(Bangladesh\) \(DOF\)](#)
- [Bangladesh Shrimp and Fish Farmers Association \(BSFF\)](#)
- [Seafood Watch report farmed shrimp, Bangladesh](#)
- [FAO's NASO profile for Bangladesh](#)

Recommendation for improvement

- Encourage feed companies to publicly disclose source fisheries (for example, via annual reports or sustainability reports, regularly updated websites, or via initiatives such as the Ocean Disclosure Project), and, where necessary, initiate Fishery Improvement Projects (FIPs).
- Encourage making Environmental Impact Assessments (EIA) and the awarding of Environmental Clearance Certificates (ECC) mandatory for all aquaculture enterprises (as opposed to aquaculture processors). EIA compliance should be monitored with the results made publicly reported.
- Encourage greater water quality and disease reporting at the provincial-level to the appropriate national and international bodies. For disease, these should include the OIE and NACA.
- Encourage the inclusion of zonal approaches into future revisions of the National Shrimp Policy, CoC and GAP standards and make adoption of these standards mandatory.
- Encourage the production of a coastal zoning plan that identifies specific zones suitable for shrimp farming to inform farm siting and effectively integrate aquaculture with other resource users.

SCORES

Management Quality:

regulatory framework

No Score

best practices

No Score

water quality

No Score

disease

No Score

feed

No Score

AIPs

No related AIP

AQUACULTURE MANAGEMENT UNITS

In FishSource, information on aquaculture management is displayed at the highest resolution unit for which data is available. Ideally, information would simply be structured around an aquaculture management area (AMA) – the primary unit within which aquaculture management practices should be coordinated across a group of farms to mitigate against cumulative impacts and shared risks. Although AMAs are sometimes recognized in industry strategy and regulatory documents, they are not yet established across all aquaculture industries; so, we typically display information at the province/state level.

MANAGEMENT AREAS

- Shrimp - Bangladesh
Khulna

 Country	 Provinces	 AMA
Shrimp - Bangladesh	Khulna	

Aquaculture Management Units