

Shrimp - China

Last updated on 6 December 2018

SUMMARY

SUMMARY

IDENTIFICATION

SCIENTIFIC NAME(S)

Penaeus vannamei, *Penaeus monodon*

SPECIES NAME(S)

Whiteleg shrimp, Camarón blanco, Giant tiger prawn

JURISDICTION

Guangdong

PREDOMINANT PRODUCTION SYSTEM

Pond

WATER SOURCE

Brackish

JUVENILE SOURCE

hatchery - closed cycle

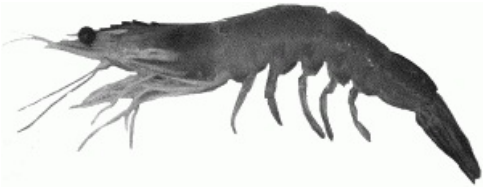


Image: [FAO, 2017](#)

RELATED LINKS:

- [Chinese Ministry of Agriculture \(MOA\)](#)

Recommendation for improvement

- Invest and conduct research into carrying capacity studies for aquaculture and use the results of these to guide decisions on site selection and the licensing of farms.
- Encourage the provincial government and industry to support the Ministry of Agriculture and Rural Affairs' 2016 notice concerning the creation of coastal aquaculture watershed plans.
- Encourage feed companies to publicly disclose source fisheries (for example, via annual reports or sustainability reports, regularly updated websites, or via initiatives such as the Ocean Disclosure Project) and, where necessary, initiate Fishery Improvement Projects (FIPs).
- Encourage the formation of a provincial producer organization that incorporates zonal management approaches, existing disease control and water quality measures, adherence to MoA Order 31, and public reporting of key performance indicators.
- Encourage the industry to publish its provincial aquaculture plan and increase the public reporting of provincial production; licensing; water quality; disease outbreak and control data; compliance with water quality and disease control regulations; and, water quality and disease enforcement measures.

SCORES

Management Quality:

regulatory framework	best practices	water quality
No Score	No Score	No Score
disease	feed	
No Score	No Score	

AIPS


No related AIP

AQUACULTURE MANAGEMENT UNITS

In FishSource, information on aquaculture management is displayed at the highest resolution unit for which data is available. Ideally, information would simply be structured around an aquaculture management area (AMA) – the primary unit within which aquaculture management practices should be coordinated across a group of farms to mitigate against cumulative impacts and shared risks. Although AMAs are sometimes recognized in industry strategy and regulatory documents, they are not yet established across all aquaculture industries; so, we typically display information at the province/state level.

MANAGEMENT AREAS

- Shrimp - China
Guangdong

 Country	 Provinces	 AMA
Shrimp - China	Guangdong	

Aquaculture Management Units